



## Kwu Tung Station on the East Rail Line

During the construction of the Lok Ma Chau Spur Line of the East Rail Line, some provisions for the tunnel structure of the future Kwu Tung Station on the East Rail Line had already been made to minimise the impact of subsequent station construction projects on train services.



## Benefits

- Facilitate residents to use the rail-based transport system, shortening their journey time.
- Serve the transport needs of the Kwu Tung North New Development Area and supports the unleashing of the development potential of the surrounding areas.

15-3

Journey time is approximately **3 minutes** from **Kwu Tung Station** to **Sheung Shui Station** (Road journey currently takes about 15 minutes during peak hours)

## Station Design

Kwu Tung Station on the East Rail Line is a two-level underground station with an island platform and station concourse at the lower and upper levels respectively, while entrances and exits are at ground level, providing passengers with convenient access to the Kwu Tung community and transfer to other means of transportation.



\* All drawings and visuals are provided for concept illustration only. The content is subject to change as the planning and design works are still in progress.

## Incorporates Sustainable Features

Enhance energy efficiency and make passengers' journeys and the community environment more comfortable and convenient

- The overall design of the station will be well-integrated with the proposed open space outside the station, providing a seamless experience for passengers to enjoy a recreational space after their journey.
- Other sustainable features include :



Natural Ventilation



Natural Lighting



Green Roof

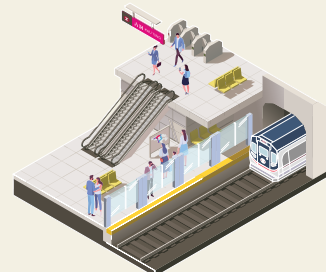


Green Wall

## Caring Station Facilities

Enhance passengers' experience

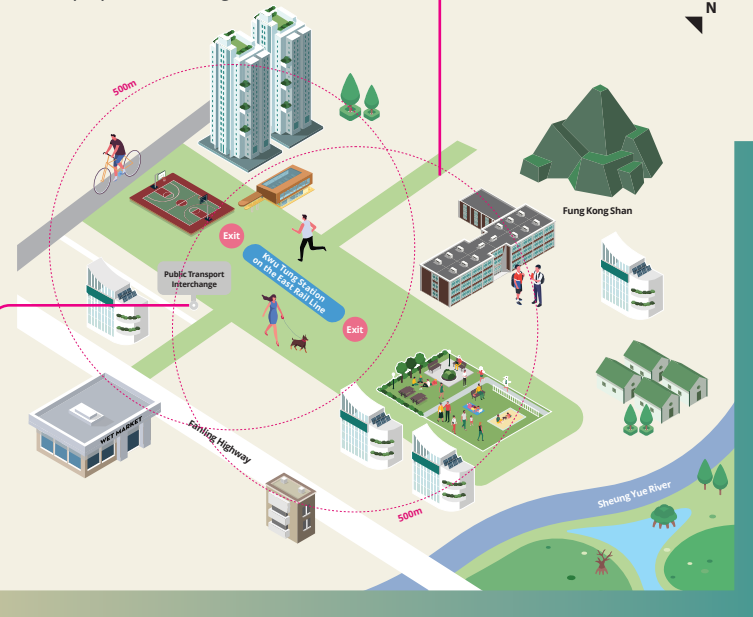
- Platform Screen Doors at platforms.
- Air conditioning in the station.
- Barrier-free accesses and public toilets at the station to facilitate passengers in need.
- Babycare rooms in the station to provide a comfortable environment for breastfeeding and baby care.



## Station Location

Building between Sheung Shui and Lok Ma Chau stations, the proposed Kwu Tung Station on the East Rail Line is located at the junction of the existing Ma Tso Lung Road and Ho Sheung Heung Road, which is also the town centre of the future Kwu Tung North New Development Area. The station will be located near the residential, retail, leisure, social services and community facilities planned by the Government to facilitate travel by residents in the vicinity.

About **80%** of the population in the Kwu Tung North New Development Area will reside within **500 metres** of the proposed Kwu Tung Station.



According to the preliminary planning and design, there will be two exits located at the eastern and western sides of the proposed Kwu Tung Station on the East Rail Line, connecting to the proposed recreational area in the Kwu Tung North New Development Area.

The western exit will be adjacent to the future wet market and **Public Transport Interchange**.

\* All drawings and visuals are provided for concept illustration only. The content is subject to change as the planning and design works are still in progress.



The MTR Corporation has taken an active approach to conducting continuous dialogue with different stakeholders on the Northern Link project. In addition to timely consultation with public and local stakeholders, we liaise closely with various parties to listen to their opinions and share updates, aiming to enhance multiple aspects of the project. Our stakeholders to be engaged include but are not limited to:



## We care about your concerns

We care about the topics that concern you and we will constantly share more updates and details with you. If you have any questions or views regarding the Northern Link project, please feel free to contact us.



Scan QR code to raise suggestion

smart  
Go beyond  
載·向未來

MTR  
心繫生活每一程



CONNECT  
BEYOND MOBILITY  
NORTHERN LINK



Scan QR code to know more

\* All drawings and visuals are provided for concept illustration only. The content is subject to change as the planning and design works are still in progress.



# Connect Beyond Mobility Northern Link

The Northern Link connects the East Rail Line and the Tuen Ma Line, offering residents a more efficient and environmentally friendly railway transport system. It also fosters the mobility of citizens within and outside the area, encouraging exploration of the infinite possibilities of the Northwest New Territories.

By serving long-term transport needs, the Northern Link promotes development of the Northwest New Territories through the provision of transport infrastructure, thereby creating greater value for the community.

Looking ahead, the Northern Link will open up exciting opportunities for the public, including for living, housing, working, business and learning in Northwest New Territories and even across all of Hong Kong. It will provide new impetus for growth and advance our concerted efforts in building a sustainable future for Hong Kong.

## Development of the Northern Link

The Northern Link project includes:

	Kwu Tung Station on the East Rail Line	The Northern Link
Main Function	To facilitate existing and future residents in the Kwu Tung North New Development Area to enjoy efficient and convenient rail services	To enhance the transport connectivity between the east and west of New Territories, supporting the unleashing of the development potential of land along the alignment
Construction Commencement*	2023	2025
Construction Completion*	2027	2034

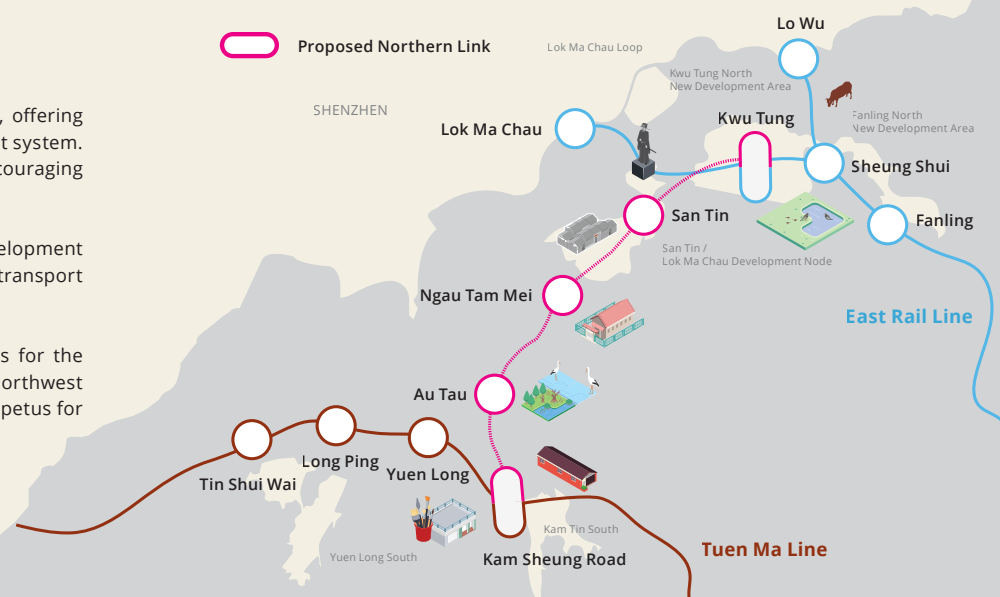
\* Subject to change as per the actual situation.

## Railway Alignment

The Northern Link\* runs from Kwu Tung Station on the Northern Link located at the Kwu Tung New Development Area, passing three intermediate stations at San Tin, Ngau Tam Mei and Au Tau, with the last stop at Kam Sheung Road Station on the Northern Link.

Along with the development of the Northern Link, various infrastructure projects and new development areas will be completed along the alignment. This will stimulate economic growth and enhance cross-boundary movement, thereby providing new impetus for development and creating a land of possibilities!

# The Northern Link project is still in the planning and design stage. The actual alignment and station locations are subject to further study.



## Key Information and Benefits

Route length of the Northern Link, building between the Kwu Tung Station and the Kam Sheung Road Station, is

**about 10.7km**

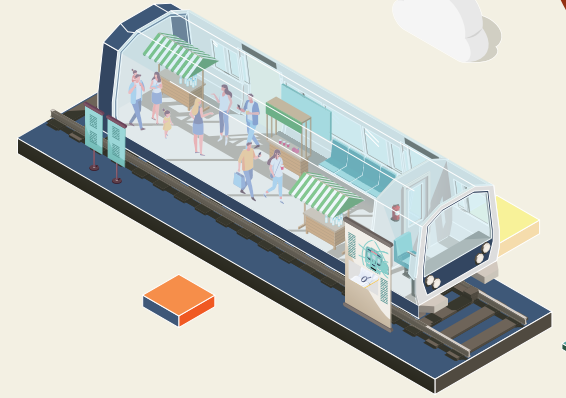
with three intermediate stations at San Tin, Ngau Tam Mei and Au Tau

Journey time is approximately

**3 minutes** from Kwu Tung Station to Sheung Shui Station (Road journey currently takes about 15 minutes during peak hours)

Journey time is approximately

**12 minutes** from Kam Sheung Road Station to Kwu Tung Station (Road journey currently takes about 60 to 80 minutes during peak hours)



## More Connected Mobility for the Future

- Connect the East Rail Line and the Tuen Ma Line, forming a railway loop and shortening journey times in the Northern New Territories.
- Provide more route alternatives for residents in the New Territories, helping divert railway passenger flow in the Northeastern New Territories and alleviating road traffic pressure.
- Enhance cross-border population mobility, particularly for those living in the west of the New Territories to easily go to the Lo Wu Control Point and the Lok Ma Chau Control Point.

## More Sustainable Living for the Future

- Embed sustainability into each stage of project delivery, including the planning, design, construction and operation stages.

- Conduct an environmental impact assessment and incorporate sustainable features into the design of the new stations, thereby supporting Hong Kong in its transition towards a carbon-neutral city.
- Utilise digital technology and innovations, such as Building Information Modelling, to enhance efficiency.
- The more convenient railway services will provide residents of the area with more opportunities for employment, as well as better access to education, medical care, shopping and social services. The enhanced connectivity will meet the future needs of our community for a better place to live and work.

## More Community Vitality for the Future

- Support the unleashing of the development potential of the land along its alignment, facilitating the housing supply and encourage business, leisure, tourism and other activities in the area, driving local employment and economic development.

## MTR Project Hotline : 2993 3333

Office hours : Monday to Friday 8:30am - 6pm  
Saturday 8:30am - 1pm  
Sundays and Public Holidays Closed

Calls will be connected to a voice mailbox when the lines are busy or after office hours. Please leave your message and we will contact you as soon as possible.

2022/JAN

For details and latest information on the MTR Northern Link Project, please refer to the MTR Northern Link Project website. <http://mtrnorthernlink.hk>



掃描二維碼閱讀中文版

Email : [newprojects@mtr.com.hk](mailto:newprojects@mtr.com.hk)  
Mailing : MTR Corporation Limited, GPO Box 9916, Hong Kong